

# YOUR CAREER IN PLANT PATHOLOGY

We invite you to engage with us, champion our cause and be part of this exciting dynamic team.

## Admission Requirements

Candidates must have Grade 12, with University entrance to study for a Bachelor's degree.

English or First Additional Language  
NSC/IEB 5 or AS level C

Mathematic: NSC/IEB 5 or AS level C  
Physical Sciences: NSC/IEB 5 or AS level C

## CONTACT US TO JOIN THIS DYNAMIC RESEARCH PLATFORM

Agricultural Sciences Building,  
University of Pretoria, Hatfield,  
lise.korsten@up.ac.za

Phone: +27 12 420 3295

[www.up.ac.za/plant-health-and-safety](http://www.up.ac.za/plant-health-and-safety)  
or

<https://www.up.ac.za/plant-and-soil-sciences/article/2542234/plant-pathology>



UNIVERSITEIT VAN PRETORIA  
UNIVERSITY OF PRETORIA  
YUNIBESITHI YA PRETORIA

***Precision agriculture  
and novel technologies  
for next generation  
solutions to feed the  
future***

# Plant Health and Safety

*Division of Plant Pathology,  
Department of Plant and Soil Sciences*

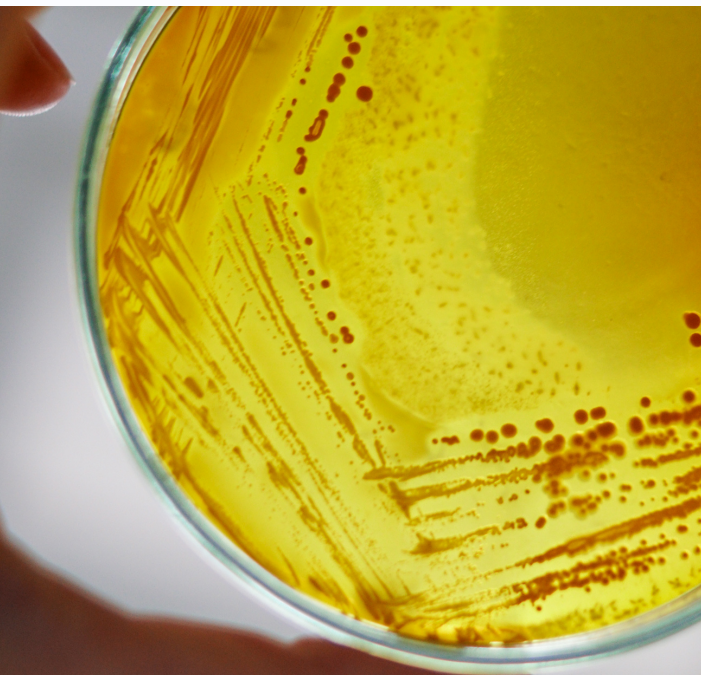




## THE PROGRAM

Through the extension and inclusion of our **key research focus areas**, we have strengthened our mandate in the field of plant pathology training, research and technology transfer as well as science directed policy.

We endeavour to expand our recently established cross-cutting **AgriMicrobiome** research group to provide novel solutions for **Plant Health** and **Food Security**. Our well established **Soilborne, Leaf and Fruit Diseases, Postharvest Pathology** and the **Seed Science** group, with their unique focus on mycotoxin fungi, are now aligned to ensure **Safe Quality Produce** for the future.



Our **Food Safety for Food Security** research group continues to grow through mobilization of global networks and the UP **One Health** and **Food Law** programme. We continue to expand our **diagnostic platform** to include a more formalised surveillance system and provide focussed plant disease diagnostic and food safety assessment services to South Africa.

## ABOUT US

### *Plant Pathology's Vision*

To be a people-centred dynamic, the multicultural team recognised for excellence and innovative research at the forefront of agricultural plant sciences, providing a knowledge hub for cutting edge, next-generation and transdisciplinary inquiries, unique to the African food system.

### *Plant Pathology's Mission*

We acknowledge well trained and highly motivated staff and students as drivers of the South African Higher Education system, and with the agricultural industry, conduct cutting edge research that benefits the global community. We will, therefore, aim to:

- Provide relevant, principle-centred education and training in the Faculty of Natural and Agricultural Sciences at the University of Pretoria;
- Be compassionate to the ambitions of our students and staff and adhere to the educational priorities of South Africa;
- Perform our duty with integrity as we serve our domestic and international stakeholders and collaborators;
- Seek every opportunity to contribute to the improvement of the quality of life by focusing on problem-oriented and novel research to advance the agricultural and food system.